

Flanged Ball Valves

2PC Flange Ball Valve TE 150LBS

Item No.:CW BV-2FTE

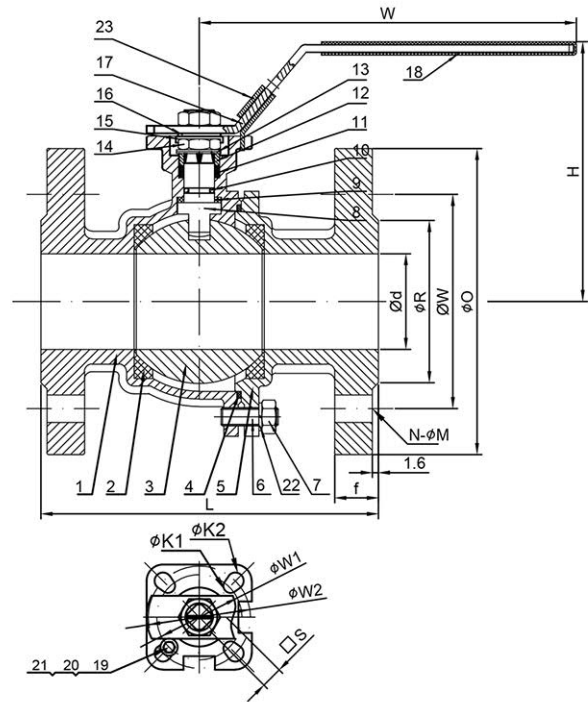
Features

- | | |
|--|-------------------------|
| 1. Pressure Rating: 150LBS | 1. 压力等级: 150LBS |
| 2. Temperature Range: -20°C ~ 180°C | 2. 工作温度: -20°C ~ 180°C |
| 3. Full Port | 3. 全通径 |
| 4. Investment Casting | 4. 熔模铸造 |
| 5. Material Standard: WCB/CF8/CF8M | 5. 材质标准: WCB/CF8/CF8M |
| 6. ISO5211 Mounting Pad | 6. ISO5211 启动平台 |
| 7. Inspection Testing: API598 | 7. 检测标准: API598 |
| 8. Design Standard: ASME B16.34 | 8. 设计标准: ASME B16.34 |
| 9. Flange Standard: AS2129 Table E | 9. 法兰标准: AS2129 Table E |
| 10. Face to Face Dimensions: ASME16.10 | 10. 结构长度: ASME16.10 |



Flanged Ball Valves

Item	名称	Description	Q'ty	Material
1	阀体	Body	1	CF8/CF8M/WCB
2	球垫	Seat	2	PTFE/RPTFE
3	球	Ball	1	304/316
4	阀盖垫片	End Seal	1	PTFE
5	阀盖	Cap	1	CF8/CF8M/WCB
6	螺栓	Bolt	4-8	304
7	螺母	Nut	4-8	304
8	阀杆	Stem	1	304/316
9	止推垫片	Thrust Washer	1	PTFE
10	O型圈	O-Ring	1	NBR/FKM
11	填料	Stem Packing	1	PTFE
12	衬套	Bushing	1	304
13	碟簧	Belleville Washer	2	304
14	中轴螺母	Stem Nut	2	304
15	防松垫片	Lug Washer	1	304
16	垫片	Washer	1	304
17	把手	Handle	1	304
18	把套	Handle Cover	1	PVC
19	定位螺栓	Positioning Bolt	1	304
20	小平垫	Little Washer	1	304
21	限位螺母	Nut	1	304
22	弹簧垫圈	Spring Washer	4-8	304
23	锁片	Lock Device	1	304



Size	d	O	W	R	N-ΦM	f	L	W	H	S	W1	W2	K1	K2
1/2"	15	95	67	47	4-Φ14	10	108	140	80	9	36	42	6	6
3/4"	20	100	73	53	4-Φ14	10	117	140	85	9	36	42	6	6
1"	25	115	83	63	4-Φ14	10	127	165	93	11	42	50	6	7
1-1/2"	38	135	98	78	4-Φ14	13	165	195	115	14	50	70	7	9
2"	50	150	114	90	4-Φ18	14	178	195	125	14	50	70	7	9
2-1/2"	64	165	127	103	4-Φ18	14	190	260	145	17	70	102	9	11
3"	76	185	146	122	4-Φ18	14	203	260	152	17	70	102	9	11
4"	96	215	178	154	8-Φ18	17	229	300	180	17	70	102	9	11

Flanged Ball Valves

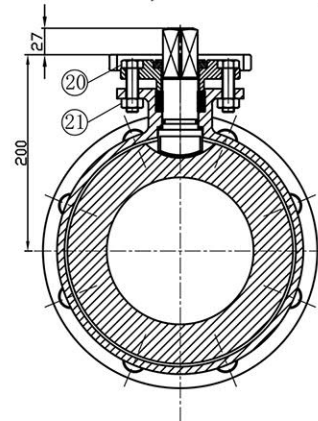
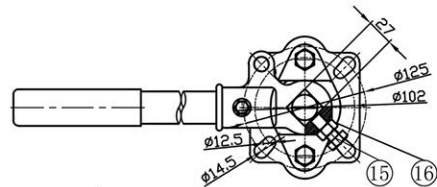
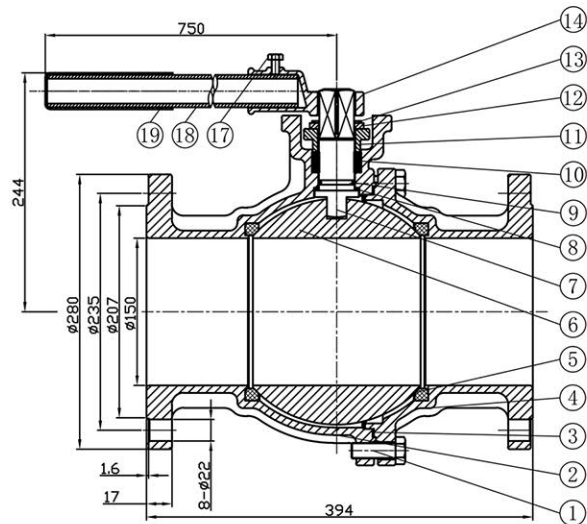
2PC Flange Ball Valve TE 150LBS 6"

Item No.:CW BV-2FTE

Features

1. Pressure Rating: 150LBS
2. Temperature Range: -20°C ~ 180°C
3. Full Port
4. Investment Casting
5. Material Standard: WCB/CF8/CF8M
6. ISO5211 Mounting Pad
7. Inspection Testing: API598
8. Design Standard: ASME B16.34
9. Flange Standard: AS2129 Table E
10. Face to Face Dimensions: ASME16.10

1. 压力等级: 150LBS
2. 工作温度: -20°C ~ 180°C
3. 全通径
4. 熔模铸造
5. 材质标准: WCB/CF8/CF8M
6. ISO5211启动平台
7. 检测标准: API598
8. 设计标准: ASME B16.34
9. 法兰标准: AS2129 Table E
10. 结构长度: ASME16.10



Item	名称	Description	Q'ty	Material
1	螺栓	Bolt	8	SUS304
2	阀体	Body	1	CF8/CF8M/WCB
3	阀盖垫片	Gasket	1	PTFE
4	阀盖	Cap	1	CF8/CF8M/WCB
5	球垫	Seat	2	PTFE/RPTFE
6	球体	Ball	1	SUS304/SUS316
7	阀杆	Stem	1	SUS304/SUS316
8	止推垫片	Thrust Washer	1	PTFE
9	O型圈	O-Ring	1	NBR/FKM
10	填料	Gland Packing	1	PTFE
11	格兰	Gland	1	CF8M
12	限位片	Stopper	1	SUS304
13	卡簧	Snap Ring	1	SUS304
14	手柄座	Handle Seat	1	CF8
15	螺栓	Bolt	1	SUS304
16	螺母	Nut	1	SUS304
17	螺栓	Bolt	1	SUS304
18	把手	Handle	1	SUS304
19	把套	Plastic Cover	1	PVC
20	螺栓	Bolt	2	SUS304
21	螺母	Nut	2	SUS304